



mission

roller hockey

MISSION
2010-2011 CATALOG

mission roller hockey

THE TRUTH.



THE BEST MINDS IN THE GAME OF ROLLER HOCKEY COMBINED WITH ONE GOAL: FIND AND DELIVER TRUE ROLLER HOCKEY INNOVATION. ALMOST TWO YEARS IN THE MAKING, WE'RE PROUD TO INTRODUCE AXIOM.

Axiom is the next generation of performance specifically for roller hockey. Because in roller many have come, many have gone, and more are sure to follow. But if you want to win in this sport, you have to be true to the game. The best ice hockey players can't make an instant jump to roller and dominate, nor can the best equipment companies. Since 1995, MISSION has put the roller player first by developing the principles of true roller innovations. Axiom is the genesis of MISSION's leading skate fit and performance features that's true to the game.



New for this year, the Axiom T.9 and T.8 gloves feature an innovative flex palm for a "death" grip and ripping puck feel.



TRUE TECH. THAT'S AXIOM.



Stretch, flex and fit unlike any other. The new Axiom T.9 pant features 16-way scorpion like flex sections for the ultimate in performance.

HI-LO
VANGUARD
magnesium



AXIOM

AXIOM IS A COMPLETE NEW LINE OF ROLLER-SPECIFIC SKATES, PANTS AND GLOVES WITH TRUE TECHNOLOGY THAT BLOWS AWAY ANYTHING WE'VE EVER MADE.

(DA-DOW! THAT'S WHAT HAPPENS WHEN THE BEST R&D TEAM IN HOCKEY UNLEASH THEIR DESIGN WRATH.)



FIERCE FIT.

TOTALLY REDESIGNED, AXIOM IS OUR BEST FITTING SKATE EVER. YES, EVER.

AXIOM

NEW AXIOM T.9, T.8, T.7, AND T.6

The Axiom line is spec'd out from toe to tongue for a totally new fit. We redesigned everything from the better fitting toe box, to the form-fitting ankle. Nothing in roller hockey can compare.

SLIP-GRIP FOOTBEDS

Anatomically correct with an innovative anti-slip design that keeps your foot locked in place.



HI-LO
VANGUARD
magnesium

When it comes to speed and forced gripping power, no other chassis comes close to HI-LO. (That's why it's patented.)

FORM-FITTING ANKLE POCKETS

Wraps around your ankle for optimum fit and amazing comfort you can feel from the first fit.



MISSION
TRUE VENTED TONGUE

Roller hockey players get a lot hotter than ice guys (and girls). The new True Vented Tongue gives you more airflow to keep the skate form-fitting by wicking away moisture.



RINK RAT MTECH

Fuses soft, 62A super resilient inner material with a hard, high wear-resistant outer layer. The inner softer layer allows the wheel to flatten like a radial tire during turns for added surface area to increase grip and control.

SWISS LE

New SWISS LE 608 bearing is our best bearing yet and packs high tolerance for long lasting speed.



AXIOM T.9



THE BEST FIT IN ROLLER

AXIOM IS THE GENESIS OF TRUE TECH AND COMFORT. T.9 IS PACKED WITH AN IMPROVED TOE BOX, INCREASED ANKLE COMFORT, AND SUPER STICKY RINK RAT WHEELS, AND ALL POWERED BY A NEW SWISS LE BEARING.



SENIOR

MATERIAL: # 1037148
QUARTERS: Ultra-light reinforced nylon tech mesh
LINER: Sublimated "Mission Haze" brushed nylon with ankle pockets
TONGUE: True Vented Tongue, perforated 2-piece pro felt
OUTSOLE: Full TEXALIUM composite outsole
CHASSIS: Magnesium HI-LO Vanguard 76/80mm
WHEEL: RINK RAT Hornet Split XXX Grip 76A
BEARING: MISSION Swiss LE 608
WIDTH: D/EE
SR. SIZES: 6.0 - 12.0 (Full & Half)

JUNIOR

MATERIAL: # 1037149
QUARTERS: Ultra-light reinforced nylon tech mesh
LINER: Sublimated "Mission Haze" brushed nylon with ankle pockets
TONGUE: True Vented Tongue, perforated 2-piece pro felt
OUTSOLE: Composite outsole
CHASSIS: 6000 Series CNC Aluminum HI-LO Vanguard
WHEEL: RINK RAT Hornet Split XXX Grip 76A
BEARING: MISSION Swiss LE 608
WIDTH: E
JR. SIZES: 1.0-5.5 (Full & Half)



TEXALIUM COMPOSITE OUTSOLE



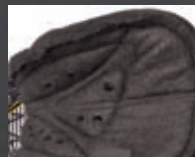
INCREASED COMFORT



FORWARD FLEX CHANNEL



ONE-PIECE ANKLE



TRUE VENTED TONGUE
2-PIECE PRO FELT



ULTRA GRIPPY HORNET SPLIT

HI-LO
vanguard
magnesium



AXIOM T.8



SENIOR

- MATERIAL:** # 1037150
QUARTERS: Light-weight reinforced nylon tech mesh
LINER: Sublimated "Mission Haze" brushed nylon with ankle pockets
TONGUE: True Vented Tongue, perforated 2-piece pro felt
OUTSOLE: Composite outsole
CHASSIS: 6000 Series CNC Aluminum HI-LO Vanguard 76/80mm
WHEEL: RINK RAT Hornet XXX Grip 76A
BEARING: MISSION Swiss LE 608
WIDTH: D/EE
SR. SIZES: 6.0 - 12.0 (Full & Half)

TEEMING WITH TECH

T.8 BRINGS THE HEAT FOR A SECOND TIER SKATE. TOTALLY REDESIGNED FOR THIS YEAR, AND SECOND ONLY TO THE T.9, THE AXIOM T.8 IS SO BUILT FOR PERFORMANCE, IT BLOWS AWAY COMPETITORS' TOP-END SKATE.



COMPOSITE OUTSOLE



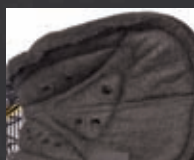
INCREASED COMFORT



FORWARD FLEX CHANNEL



ONE-PIECE ANKLE



TRUE VENTED TONGUE
2-PIECE PRO FELT



ULTRA GRIPPY HORNETS



HI-LO
VANGUARD



AXIOM T.7

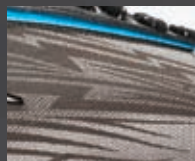


SENIOR

MATERIAL: # 1037151
QUARTERS: Reinforced tech nylon
LINER: Brushed nylon
TONGUE: Perforated 2-piece elite felt tongue
OUTSOLE: Composite outsole
CHASSIS: 6000 Series CNC Aluminum HI-LO Vanguard 76/80mm
WHEEL: RINK RAT Hot Shot XXX Grip 76A
BEARING: MISSION Swiss LE 608
WIDTH: D/EE
SR. SIZES: 6.0 - 12.0 (Full & Half)



COMPOSITE OUTSOLE



REINFORCED TECH NYLON



FORWARD FLEX CHANNEL



ONE-PIECE ANKLE



2-PIECE ELITE FELT TONGUE



RINK RAT HOT SHOT

THE T.7 MIXES THE BEST IN VALUE AND PERFORMANCE. NOW POWERED BY MISSION SWISS LE 608 BEARINGS.

HI-LO
VANGUARD



AXIOM +8



SENIOR

MATERIAL: # 1037152
QUARTERS: Reinforced woven nylon
LINER: Brushed nylon
TONGUE: 2-piece felt tongue
OUTSOLE: Composite outsole
CHASSIS: 6000 Series Extruded Aluminum HI-LO Vanguard 76/80mm
WHEEL: RINK RAT Hot Shot XXX Grip 76A
BEARING: MISSION ABEC 9 608
WIDTH: D/EE
SR. SIZES: 6.0 - 12.0 (Full & Half)



COMPOSITE OUTSOLE



REINFORCED WOVEN NYLON



FORWARD FLEX CHANNEL



ONE-PIECE ANKLE



2-PIECE FELT TONGUE



RINK RAT HOT SHOT

JUNIOR

MATERIAL: # 1037153
QUARTERS: Reinforced woven nylon
LINER: Brushed nylon
TONGUE: 2-piece felt tongue
OUTSOLE: Composite outsole
CHASSIS: 6000 Series Aluminum Violator HI-LO Vanguard
WHEEL: RINK RAT Hot Shot XXX Grip 76A
BEARING: MISSION ABEC 7 608
WIDTH: E
JR. SIZES: 1.0-5.5 (Full & Half)

HI-LO
VANGUARD





AXIOM A3

SENIOR

MATERIAL # 1037528
QUARTERS: Textured PU
LINER: Brushed nylon
TONGUE: Felt tongue
OUTSOLE: Injected TPR outsole
CHASSIS: 6000 Series Extruded Aluminum HI-LO Vanguard 76/80mm
WHEEL: MISSION DSX indoor 76A
BEARING: MISSION ABEC 7 608
WIDTH: E
SR. SIZES: 6.0 - 12.0 (Full Sizes Only)

JUNIOR

MATERIAL # 1037529
QUARTERS: Textured PU
LINER: Brushed nylon
TONGUE: Felt tongue
OUTSOLE: Injected TPR outsole
CHASSIS: 6000 Series Aluminum Violator HI-LO Vanguard
WHEEL: MISSION DSX indoor 76A
BEARING: MISSION ABEC 7 608
WIDTH: E
JR. SIZES: 1.0-5.0 (Full Sizes Only)



AXIOM A4

SENIOR

MATERIAL # 1037530
QUARTERS: Textured PU
LINER: Brushed nylon
TONGUE: Felt tongue
OUTSOLE: Injected TPR outsole
CHASSIS: 6000 Series Aluminum Violator HI-LO Vanguard 76/80mm
WHEEL: MISSION CSX indoor/outdoor 78A
BEARING: MISSION ABEC 7 608
WIDTH: E
SR. SIZES: 6.0 - 12.0 (Full Sizes Only)

JUNIOR

MATERIAL # 1037531
QUARTERS: Textured PU
LINER: Brushed nylon
TONGUE: Felt tongue
OUTSOLE: Injected TPR outsole
CHASSIS: Steel Violator HI-LO Vanguard
WHEEL: MISSION CSX indoor/outdoor 78A
BEARING: MISSION ABEC 5 608
WIDTH: E
JR. SIZES: 1.0-5.0 (Full Sizes Only)

YOUTH

MATERIAL # 1037532
QUARTERS: Textured PU
LINER: Brushed nylon
TONGUE: Felt tongue
OUTSOLE: Injected TPR outsole
CHASSIS: Steel Violator HI-LO Vanguard
WHEEL: MISSION CSX indoor/outdoor 78A
BEARING: MISSION ABEC 5 608
WIDTH: E
YTH. SIZES: Y10-Y13 (Full Sizes Only)

MISSION AS



SENIOR

MATERIAL # 1037533
QUARTERS: Textured PU
LINER: Brushed nylon
TONGUE: Felt tongue
OUTSOLE: Injected TPR outsole
CHASSIS: 6000 Series Aluminum Violator HI-LO Vanguard 76/80
WHEEL: MISSION BSX outdoor 82A
BEARING: MISSION ABEC 5 608
WIDTH: E
SR. SIZES: 6.0 - 12.0 (Full Sizes Only)

JUNIOR

MATERIAL # 1037534
QUARTERS: Textured PU
LINER: Brushed nylon
TONGUE: Felt tongue
OUTSOLE: Injected TPR outsole
CHASSIS: Steel Violator HI-LO Vanguard
WHEEL: MISSION BSX outdoor 82A
BEARING: MISSION ABEC 5
WIDTH: E
JR. SIZES: 1.0-5.0 (Full Sizes Only)

YOUTH

MATERIAL # 1037535
QUARTERS: Textured PU
LINER: Brushed nylon
TONGUE: Felt tongue
OUTSOLE: Injected TPR outsole
CHASSIS: Steel Violator HI-LO Vanguard
WHEEL: MISSION BSX outdoor 82A
BEARING: MISSION ABEC 5 608
WIDTH: E
YTH. SIZES: Y10-Y13 (Full Sizes Only)

WHEEL RANGE

all mission skates

WHEEL SIZES BY SKATE SIZE

SKATE SIZE	WHEEL SIZE	WHEELS ON CHASSIS
Youth 10-11:	59mm/68mm	3 wheel chassis
Youth 12 - Size 3:	59mm/68mm	4 wheel chassis
Size 4 - 5.5:	68mm/72mm	4 wheel chassis
Size 6 - 12:	76mm/80mm	4 wheel chassis





**YOU ASKED FOR A
BETTER GOALIE SKATE.**
WE PUT THE BEST TO WORK DESIGNING IT.
 - INTRODUCING THE FRONT LOADED G.7

FMH *MISSION*
TECHNOLOGY

Side-to-side, tenders need both power and flexibility. The Full Motion Heel (FMH) does just that: Offering more flexibility and free motion, yet built with full ankle support for stronger push-offs and lateral movements.

G.7 GOALIE

MATERIAL # 1037630

- QUARTERS:** Nylon tech mesh
- LINER:** Sublimated "Mission Haze" brushed nylon with ankle pockets
- TONGUE:** Felt tongue
- COWLING:** Injected TPR molded black cowling
- CHASSIS:** 6000 Series CNC extruded Aluminum Frontload 4 wheel chassis
- WHEEL:** RINK RAT 59mm Crossbar goalie wheel XXX Grip 76A
- BEARING:** MISSION ABEC 5 608
- WIDTH:** D, EE
- SR. SIZES:** 6 -11.5 (Full and Half)
12-13 (Full Sizes Only)



FRONTLOAD CHASSIS TECHNOLOGY

Front loaded technology keeps goalies in a ready stance, perfectly balanced on the balls of the feet for optimum balance and stability.

FrontLoad chassis technology accommodates both 47mm or 59mm wheel set-ups.



FULL MOTION HEEL



INCREASED COMFORT



NYLON TECH MESH



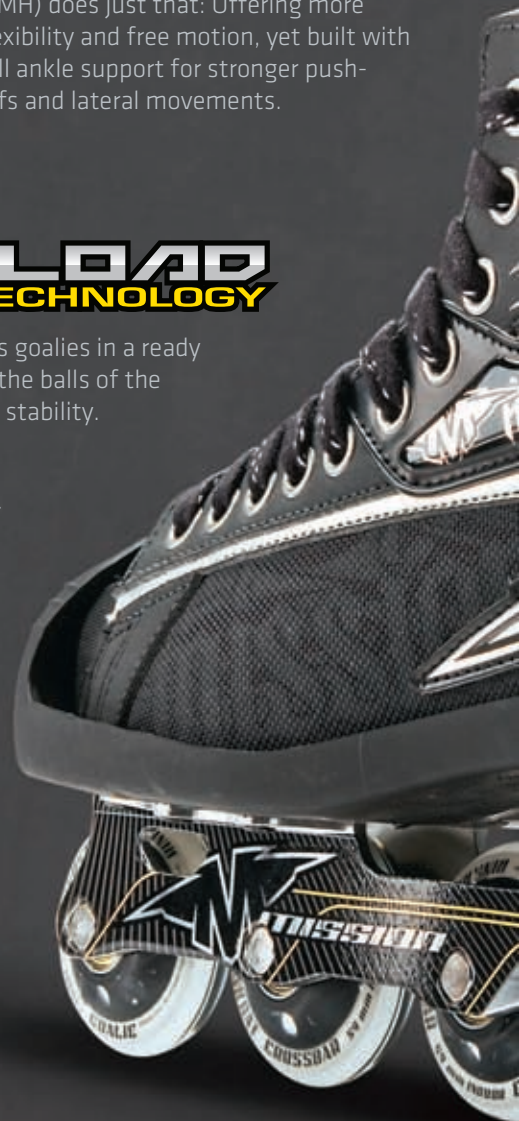
INJECTED TPR COWLING



FRONTLOAD CHASSIS TECH



RINK RAT CROSS BAR
59MM WHEELS





40
3

BAUER

MISSION

MISSION

MISSION

FRONTLOAD
CHASSIS TECHNOLOGY

M
GOALIE

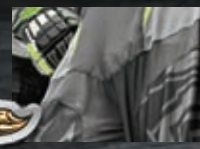
GOALIE



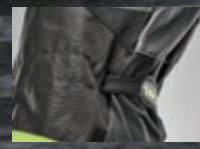




**A PARKING LOT. TWO TEAMS.
30 FRIENDS. ONE AMAZING GAME.**
mission roller hockey



SCORPION FLEX



TOUGH 1680D KNEES



MORE VENTILATION

MISSION FLEX

LIGHTER. MORE FLEX ZONES. BUILT DURABLE.
THAT'S WHY THEY'RE THE #1 PANT IN ROLLER HOCKEY.

SENIOR # 1037162 JUNIOR # 1037253

- MATERIALS:** 16-way, Scorpion stretch ventilated nylon
- LOGOS:** Sublimated and silkscreen
- KNEE:** 1680D nylon, reinforced with 700D nylon dual layer slip knee
- FEATURES:** Adjustable shin sling and adjustable nylon web
Rip Cord belt system
- STRETCH:** Multiple LYCRA panels
- SIZES:** JR: S-L, SR: S-XL
- COLORS:** BGN, WHT, BKR, BLK

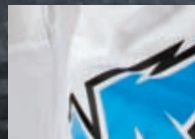




SCORPION FLEX



TOUGH 1680D KNEES



MORE VENTILATION



ASTON 18

HARD HITTING PERFORMANCE, FUNCTION AND FASHION

SENIOR # 1037254

JUNIOR # 1037255

- MATERIALS:** Ventilated nylon
- LOGOS:** Sublimated and silkscreen
- KNEE:** 1680D nylon, reinforced with 700D nylon dual layer slip knee
- FEATURES:** Adjustable shin sling, cargo pant pocket and adjustable nylon web Rip Cord belt system
- STRETCH:** LYCRA stretch panels
- SIZES:** JR: S-L, SR: S-XL
- COLORS:** BKY, RBW, WBG, BWG, BBW





MISSION™

SENIOR # 107256

JUNIOR # 1037257

- MATERIALS:** Ventilated nylon
LOGOS: Silkscreen
KNEE: 1680D nylon, reinforced with 700D nylon dual layer slip knee
FEATURES: Adjustable shin sling, cargo pant pocket and adjustable nylon web Rip Cord belt system
STRETCH: LYCRA stretch panels
SIZES: JR: S-L, SR: S-XL
COLORS: BGN, BLK, WHT, RBK





WAIST SIZING FOR ALL PANTS

Senior (XL) 38+	(L) 34-36	(M) 32-34	(S) 30-32
Junior	(L) 28-30	(M) 26-28	(S) 24-26



SENIOR # 1037627

JUNIOR # 1037628

MATERIALS: Ventilated nylon
LOGOS: Silkscreen
KNEE: 1680D nylon
FEATURES: Adjustable nylon web Rip Cord belt system
SIZES: JR: S-L, SR: S-XL
COLORS: BKR, BKW, BKB, WBK





ASTON 19

NEW FLEX PALM WITH A "DEATH" GRIP AND PUCK-RIPPING FEEL

SENIOR 13-15" # 1037167 JUNIOR 12" # 1037168

- MATERIALS:** Lightweight flexible stretch PU and CLARINO
- LINER:** Full ATL (Antibacterial - Temperature reducing liner) liner with "Mission Haze" pattern sublimation
- PALM:** LYCRA mesh and dual layer nash palm
- BUSSETS:** CLARINO
- FOAM:** Pro level, dual density foam with plastic inserts
- SIZES:** 12"-15"
- COLORS:** BLK , WHT



ANTI-LOCK THUMB



FULL ATL LINER



PRO-LEVEL,
DUAL-DENSITY FOAM



AS100 1.8

LIGHTWEIGHT AND PACKED WITH PERFORMANCE

SENIOR 13-15" # 1037243 JUNIOR 11-12" # 1037244

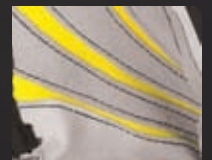
- MATERIALS:** PU + lightweight mesh and CLARINO
LINER: Polyester mesh liner with "Mission Haze" pattern sublimation
PALM: LYCRA yellow mesh and dual layer nash palm
GUSSETS: LYCRA mesh
FOAM: Pro level, dual density foam with plastic inserts
SIZES: 11"-15"
COLORS: BGN, BKW, WRD, WBU



LIGHTWEIGHT MESH
AND CLARINO



BACK HAND LINER



GRIP-REAPER TECH



ASTOM TB

SENIOR 13-15" # 1037245
 JUNIOR 10-12" # 1037246
 YTH 9" # 1037247

MATERIALS: Cable Mesh and Black Tricot (Lightweight + Flexible)
LINER: Black Tricot
PALM: Dual layer nash palm
GUSSETS: Polyester
FOAM: Single layer density foam
SIZES: 9" - 15"
COLORS: BGN, BKW, BKR, BKB



ASTOM AS

SENIOR 13-15" # 1037623
 JUNIOR 10-12" # 1037624
 YTH 9" # 1037625

MATERIALS: Polyester
LINER: Polyester
PALM: Single layer nash palm
GUSSETS: Polyester
FOAM: Single layer density foam
SIZES: 9" - 15"
COLORS: BKB, BKR, BKW





ON THE ROAD TO COLLEGE SCHOLARSHIPS,
AND NARCH GOLD MEDALS,
**THERE IS NO
OFF SEASON**





American Apparel™

Old School T # 1037301



American Apparel™

Kings of Court T # 1037259



American Apparel™

Hockey Hero T # 1037258



American Apparel™

Resistance T # 1037298



American Apparel™

High Sign T # 1037299



American Apparel™

Tornado T # 1037300



American Apparel™

Evil M T # 1037950



American Apparel™

Metal LS # 1037302



American Apparel™

Axiom LS # 1037303



Resistance Cap

1037308



Tone Def Cap

1037306



Axiom Cap

1037307



Old School Cap

1037309



Axiom Beanie

1037310



Gatsby Cap

1037855



High Sign Hoodie

1037305



Resistance Full-Zip Hoodie

1037258



SHIRT & SWEATSHIRT SIZING

SIZE	S	M	L	XL	2XL
CHEST (inches)	34-36	38-40	42-44	46-48	48-50

T-SHIRTS AND LONG-SLEEVES

All t-shirts and long-sleeves are 100% cotton made by AMERICAN APPAREL.

S, M, L, XL, XXL

SWEATSHIRTS

All sweatshirts are 80% cotton, 20% polyester. The Mission Resistance Full-Zip Hoodie and the Mission High Sign Pullover Hoodie are made by MONSTER FLEECE.

S, M, L, XL, XXL

HATS AND BEANIE

All hats are made by NEW ERA Cap. Tone Def and Axiom Hats are the NEW ERA 5950 model. Fitted sizes are as follows: 7; 71/4; 73/8; 71/2; 75/8; 73/4; 77/8; 8. Resistance Cap is a NEW ERA 3930 model. Adjustable Fit S/M; M/L Mission Cabbie Hat is a NEW ERA model. Sizes XS, S, M, L and XL. Mission Axiom Beanie is made by NEW ERA. OSFM Mission Old School Hat is a NEW ERA model 920, with an adjustable clip. OSFM.

TEAM APPAREL

authentic team mission threads





Full body and upper arm padding



Full body padding



Thorax Flow Shirt

SENIOR # 1034996 JUNIOR # 1034997

- BODY:** Moisture wicking polyester with LYCRA side panels
- FOAM:** Single density perforated foam with plastic inserts
- FEATURES:** Full upper body padding throughout the chest, sternum, back, shoulders, spine and arm sections
- LOGOS:** Fully sublimated MISSION logos with rubberized logo badge
- SIZES:** Senior: S/M, L/XL
Junior: XS, S, M, L



Thorax Shirt

SENIOR # 1035933 JUNIOR # 1035934

- BODY:** Moisture wicking polyester with LYCRA side panels
- FOAM:** Single density perforated foam with plastic inserts
- FEATURES:** Sleeveless shirt design provides more mobility and movement in the arm and shoulder areas. Padding throughout the chest, sternum, back, shoulders and spine
- LOGOS:** Fully sublimated MISSION logos with rubberized logo badge
- SIZES:** Senior: S/M, L/XL
Junior: XS, S, M, L



BUILT IN XO PRO CUP with athletic supporter

THORAX

play hard. wear protection.



Thorax Flow Girdle

SENIOR # 1034998 JUNIOR # 1034999

- BODY:** 16 way stretch mesh body
- CUP:** Built in XO PRO CUP™ with athletic supporter
- FOAM:** Single density articulated foam with removable plastic inserts which covers hip, thigh and tailbone areas
- ADDED PADS:** Additional single density foam padding with plastic inserts applied to kidney and lower-back area, for added protection
- LOGOS:** Silk screen logo applications, custom print webbing and custom waist-band logo
- SIZES:** Senior: S, M, L, XL
Junior: S, M, L



BUILT IN CUP with athletic supporter



BUILT IN CUP with athletic supporter

Thorax Girdle

SENIOR # 1035000 JUNIOR # 1035001

- BODY:** Stretch LYCRA mesh body
- CUP:** Built in cup with athletic supporter
- FOAM:** Single density articulated foam with removable plastic inserts which covers hip, thigh and tailbone areas
- LOGOS:** Silk screen logo applications, custom print webbing and custom waist-band logo
- SIZES:** Senior: S, M, L, XL
Junior: S, M, L

CSX Girdle

SENIOR # 1035002 JUNIOR # 1035003 YOUTH # 1035004

- BODY:** Poly open cell mesh, with stretch LYCRA crotch area
- CUP:** Built in cup with athletic supporter
- FOAM:** Single density perforated foam which covers hip, thigh and tailbone area; tailbone pad has plastic insert and foam padding
- LOGOS:** Silk screen logo applications and custom printed adjustable belt
- SIZES:** Senior: S, M, L, XL
Junior: S, M, L
Youth: M, L



GOALIE

commander & soldier series



Commander Goal Pads

SENIOR # 1035677 INTERMEDIATE # 1035678

- Ultra-lightweight pro hybrid style design with regulated flex
- Multi-flex flat face design: pro spec sizing 11"
- Maximum coverage square thigh and square boot design
- Easily adjustable top straps customize the fit and closure
- Two-piece lower leg lock
- AKL: adjustable knee lock and adjustable knee lifts
- Flat five-hole construction with additional cheater
- Integrated over-pant thigh protector
- Stock colors offered in smooth PU with weave graphic overlays and embroidered logos



COLORS: BKW, WBK
SIZES: Senior: 33", 35", 37"
 Intermediate: 28", 30", 32"

*All sizes include a 1" extra thigh rise



Commander Catch Glove

SENIOR # 1035667 INTERMEDIATE # 1035668

- Ultra-lightweight construction
- Compact game-ready break-in design
- Pre-curved palm construction and deep single-t pocket
- Unique inner hand "bridge" for optimal fit and control of glove
- Flex armor full motion backhand design
- Double wrist/hand strap adjustment
- Oversized backhand opening and wrist protector to increase hand mobility
- Stock colors offered in smooth PU with weave graphic overlays and embroidered logos

COLORS: BKW, WBK
AVAILABLE: Regular and Full Right
SIZES: Senior, Intermediate

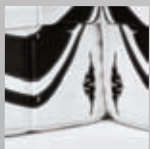


Commander Blocker

SENIOR # 1035669 INTERMEDIATE # 1035671

- Ultra-lightweight construction
- Angled block to increase wrist mobility and ease of puck deflection
- Unique contour-flex split finger protectors with added floating index protection
- Tapered bottom edge
- Maximum coverage and protection side hand
- Reinforced nash and nylon mesh palm
- Stock colors offered in smooth PU with weave graphic overlays and embroidered logos

COLORS: BKW, WBK
AVAILABLE: Regular and Full Right
SIZES: Senior, Intermediate



Ultra-light pro hybrid



Multi-flex front



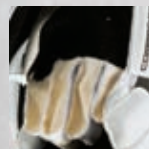
Deep pocket



Pre-curved palm



Angled blocker



Reinforced nash palm



White/Black



Black/White





Soldier Catch Glove

SENIOR # 1035697 JUNIOR # 1035629

- Ultra-lightweight construction
- Compact game-ready break-in design
- Pre-curved palm construction
- Deep single-t pocket
- Unique inner hand "bridge" for optimal fit and control of glove
- Flex armor full motion backhand design
- Double wrist/hand strap adjustment
- Oversized backhand opening and wrist protector to increase hand mobility
- Stock colors offered in smooth PU with screened graphics and logos

COLORS: BWR, WYB, WBK, WBB
AVAILABLE: Regular and Full Right

SIZES: Senior, Junior



Soldier Blocker

SENIOR # 1035630 JUNIOR # 1035631

- Ultra-lightweight construction
- Angled block to increase wrist mobility and ease of puck deflection
- Unique contour-flex split finger protectors
- Tapered bottom edge
- Maximum coverage and protection side hand
- Reinforced nash and nylon mesh palm
- Stock colors offered in smooth PU with screened graphics and logos

COLORS: BWR, WYB, WBK, WBB
SIZES: Senior, Junior
AVAILABLE: Regular and Full Right



Soldier Goal Pads

SENIOR # 1035693 JUNIOR # 1035696

- Ultra-lightweight pro hybrid style design with regulated flex
- Multi-flex flat face design: pro spec sizing 11"
- Maximum coverage square thigh and square boot design
- AKL: adjustable knee lock and adjustable knee lifts
- Flat five-hole construction with additional cheater
- Integrated over-pant thigh protector
- Stock colors offered in smooth PU with screened graphics and logos

COLORS: BWR, WYB, WBK, WBB
SIZES: Senior: 32", 34", 36", 38"
 Junior: 26", 28", 30"
 *All sizes include a 1" extra thigh rise



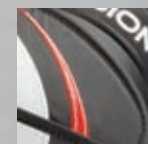
White/Blue/Black White/Black Black/White/Red White/Yellow/Black



Ultra-light pro hybrid



Multi-flex front pads



Flex armor glove



Reinforced nash palm



GOALIE

grommet series & goalie pad sizing



Grommet Glove

MATERIAL # 1035704

- Diamond twill outer construction
- Deep single- t trapping pocket
- Compact, game-ready break-in design
- Inner nash palm for better grip and comfort on catching hand
- Oversized backhand opening, with single wrist/hand strap adjustment

COLORS: WBR

SIZES: Junior Regular, Junior Full Right



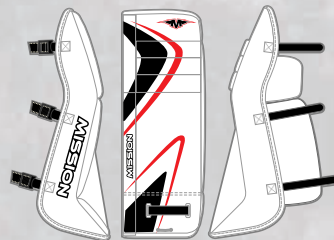
Grommet Pads

MATERIAL # 1035632

- Ultra-lightweight inner foam construction
- Nylon outer construction, nylon calf panel
- Compact, game-ready break-in design
- Flat face pads, with anatomical knee design
- Nylon web leg straps with plastic buckles allow for a quick fit
- Toe pad lace included for a more snug and accurate fit

COLORS: WBR

SIZES: 22", 24", 26", 28"



Grommet Blocker

MATERIAL # 1035705

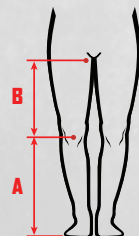
- Diamond twill outer construction
- Compact, game-ready break-in design
- Lightweight foam blocker insert
- Curved blocker for better puck and rebound control
- Traditional lace-up cuff design, with nash palm

COLORS: WBR

SIZES: Junior Regular, Junior Full Right

GOALIE PAD SIZING CHART

COMMANDER, SOLDIER & GROMMET PADS



MEASURE YOUR BODY TO GET THE CORRECT SIZE

- Measure the distance from the base of the foot to the center of the knee cap.
- Measure the distance from the center of the knee cap to desired thigh rise height.
- Multiply your skate size by 0.75 (size 10 skate maximum).

A + B + C = THE ESTIMATED SIZE OF THE GOAL PAD. (GOALIE'S HEIGHT IS AN IMPORTANT FACTOR.)

*This is a 'general' sizing equation. It is recommended that you try on the goal pad to obtain 'true' sizing.





MISSION M15 Helmet

MISSION M15 HELMET (M15) MATERIAL # 1033708

GAMEDAY PROTECTION

- Two-piece adjustable shell
- Quick tool adjustment
- Vinyl nitrile foam liner
- Excellent ventilation
- Integrated padded ear piece
- Adjustable chin strap
- CSA, HECC, CE Certified

CUSTOMIZED FIT:

Quick Tool Adjustment

COMFORT:

Integrated padded ear piece

COLORS:

Blk, Wht, Roy, Red, Nav

SIZES:

S, M, L



M1505 Wire Combo

MISSION M1505 COMBO W/WIRE MATERIAL # 1033709

GAMEDAY PROTECTION

- MISSION M15 helmet and Bauer RBE III face mask features and benefits combined.
- Face mask comes completely assembled to the helmet.
- XS combo features MISSION M15 helmet (size Small) with Bauer RBE III JR wire (906).
- CSA, HECC, CE Certified

WIRE COLOR: Blk

COLORS: Blk, Wht, Nav

SIZES: XS, S, M, L



M1501 Shield Combo

MISSION M1501 COMBO W/SHIELD MATERIAL # 1033710

GAMEDAY PROTECTION

- MISSION M15 helmet BAUER CONCEPT II features and benefits combined.
- Face protector comes completely assembled to the helmet
- CSA, HECC, CE Certified

HELMET COLORS: Blk, Wht

SIZES: S, M, L

Open helmet to its largest setting and position on the head so that the front edge of the helmet is one finger width above the eyebrows. Slide the front and back portions of the helmet together until a comfortable, snug fit is achieved. Tighten the adjustment mechanism. Players should only use CSA, HECC and CE certified helmets. These helmets have stickers affixed that indicate their compliance with the applicable standards.

WARNING: Hockey helmets are required for all levels of play and must meet CSA, HECC, or CE certification standards. All MISSION hockey helmets meet or exceed these standards. Roller Hockey is a collision sport that is dangerous. These helmets afford no protection from neck, spinal, or certain types of brain injuries including those that may be caused by rotational forces. Severe head, brain, or spinal injuries including paralysis or death may occur despite wearing this helmet. Do not use this helmet if the shell is cracked or if the interior padding is deteriorated. Read instructions carefully before wearing.

HELMETS

cranium protective.



BOSS Wheeled Equipment Backpack

MATERIAL # 1035041

MATERIALS: 600D hexagon ripstop nylon
FEATURES: Telescopic handle, padded shoulder straps, padded back, ventilated mesh skate pockets, heavy gauge rubber bottom, inline style rolling wheels, adjustable sternum strap, #10 zippers, ventilated front mesh pocket, rubber pull handle, screened MISSION logos, metal grommets for added ventilation

DIMENSIONS: 17" x 23" x 16"

COLORS: BKB



Telescopic handle



Heavy-duty wheel bag

BOSS Equipment Backpack

MATERIAL # 1035042

MATERIALS: 600D hexagon ripstop nylon
FEATURES: Padded shoulder straps, padded back, #10 zippers, ventilated mesh skate pockets, rubber pull handle, heavy gauge rubber bottom, adjustable sternum strap, ventilated front mesh pocket, screened MISSION logos, metal grommets for added ventilation

DIMENSIONS: 17" x 23" x 16"

COLORS: BLK, RBK



CSX Equipment Backpack

MATERIAL # 1035093

MATERIALS: 600D hexagon ripstop nylon
FEATURES: Padded shoulder straps, padded back, rubber pull handle, #10 zippers, adjustable sternum strap, heavy gauge rubber bottom, ventilated front mesh pocket, metal grommets for added ventilation, screened MISSION logos

DIMENSIONS: 17" x 23" x 16"

COLORS: BKG



MISSION Team Series Duffel

MATERIAL # 1035095

MATERIALS: 1200D nylon/ 600D hexagon ripstop nylon

FEATURES: Throw and carry handles at each end of the bag, removable zippered side pockets for easy logo screening, #10 zippers, nylon webbed carry straps with VELCRO enclosure, screened MISSION logos

DIMENSIONS: 38" x 18" x 18"

COLORS: BKG

MISSION BAGS

backpacks, duffel, stick & school



MISSION Stick Bag

MATERIAL # 1035096

MATERIALS: 600D hexagon ripstop nylon

FEATURES: #10 Zippers, holds 3-4 player sticks, 1-2 goalie sticks screened MISSION logos, adjustable for Sr. and Jr. sticks nylon webbed carry straps with VELCRO enclosure

DIMENSIONS: 71" x 6"

COLORS: BKG

MISSION School Backpack

MATERIAL # 1035094

MATERIALS: 600D hexagon ripstop nylon

FEATURES: Padded back, padded shoulder straps, laptop storage pocket, rubber pull handle, zippered accessory pockets, #10 zippers, front mesh storage pocket, adjustable sternum strap, screened MISSION logos, heavy gauge rubber bottom

DIMENSIONS: 16" x 10" x 19"

COLORS: BKG



ACCESSORIES

chassis, bearings, wheels and more



Zero G Puck

MATERIAL # (SINGLE) 1036291
MATERIAL # (BULK 72 PIECES) 1036292

This revolutionary puck design allows for more rotation and less surface friction by incorporating strakes (pegs) that act as lift improvement devices.



Vanguard Magnesium Chassis

MATERIAL # 1036119

Made with magnesium alloy. Patented HI-LO Vanguard chassis with 76/80mm wheel setup. Available in size small, medium, and large. Complete with (8) 608 center spacers (Material # 1036211), (8) RECP flush mount axles (Material # 1036209), (8) square head bolt chrome (Material # 1036208), (8) 688 micro center spacers Material # 1036212) and a MISSION skate tool.



Vanguard Aluminum Chassis

MATERIAL # 1036118

Made with 7000 series aluminum. Patented HI-LO Vanguard chassis with 76/80mm wheel setup. Available in size small, medium, and large. Complete with (8) 608 center spacers (Material # 1036211), (8) RECP flush mount axles (Material # 1036209), (8) square head bolt chrome (Material # 1036208), (8) 688 micro center spacers Material # 1036212) and a MISSION skate tool.



DSX Outdoor Wheel 608

MATERIAL # (SINGLE)	MATERIAL # (4 PACK)
SIZES: 59mm, 68mm, 72mm, 76mm, 80mm	
COLOR: Green	HARDNESS: 84A
SURFACE: Outdoor, asphalt, street	
Single 80MM	# 1036218
Single 76MM	# 1036219
Single 72MM	# 1036221
Single 68MM	# 1036222
Single 59MM	# 1036223
4-Pack 80MM	# 1036245
4-Pack 76MM	# 1036246
4-Pack 72MM	# 1036248
4-Pack 68MM	# 1036249
4-Pack 59MM	# 1036250



CSX Indoor Outdoor Wheel 608

MATERIAL # (SINGLE)	MATERIAL # (4 PACK)
SIZES: 59mm, 68mm, 72mm, 76mm, 80mm	
COLOR: Clear/Red	HARDNESS: 78A
SURFACE: Indoor/outdoor, multi-surface, smooth surface	
Single 80MM	# 1036179
Single 76MM	# 1036180
Single 72MM	# 1036181
Single 68MM	# 1036182
Single 59MM	# 1036233
4-pack 80MM	# 1036256
4-pack 76MM	# 1036257
4-pack 72MM	# 1036259
4-pack 68MM	# 1036260
4-pack 59MM	# 1036273



DSX Indoor Wheel 608

MATERIAL # (SINGLE)	MATERIAL # (4 PACK)
SIZES: 59mm, 68mm, 72mm, 76mm, 80mm	
COLOR: Blue	HARDNESS: 76A
SURFACE: Indoor, sport court, tile	
Single 80MM	# 1036224
Single 76MM	# 1036225
Single 72MM	# 1036176
Single 68MM	# 1036177
Single 59MM	# 1036178
4-Pack 80MM	# 1036251
4-Pack 76MM	# 1036252
4-Pack 72MM	# 1036253
4-Pack 68MM	# 1036254
4-Pack 59MM	# 1036255



BSX Outdoor Wheel 608

MATERIAL # (SINGLE)	MATERIAL # (4 PACK)
SIZES: 59mm, 68mm, 72mm, 76mm, 80mm	
COLOR: Clear/Black	HARDNESS: 82A
SURFACE: Outdoor, asphalt, street	
Single 80MM	# 1036234
Single 76MM	# 1036238
Single 72MM	# 1036239
Single 68MM	# 1036241
Single 59MM	# 1036244
4-pack 80MM	# 1036261
4-pack 76MM	# 1036274
4-pack 72MM	# 1036262
4-pack 68MM	# 1036263
4-pack 59MM	# 1036264





Swiss LE 608 Bearings

MATERIAL # 1037979

Swiss engineered components and specifications offering unmatched speed and durability. Complete with regular 608 and fat boy center spacers.



ABEC 9 608 Bearings

MATERIAL # 1036214

MISSION factory precision made ABEC 9 rated bearings. Complete with regular 608 and fat boy center spacers.



ABEC 7 608 Bearings

MATERIAL # 1036216

MISSION factory precision made ABEC 7 rated bearings. Complete with regular 608 and fat boy center spacers.



Axle/Spacer Kit

MATERIAL # 1036206

MISSION factory replacement axles, bolts, and 608 center spacers. Kit contains (8) 608 center spacers (Material# 1036211), (8) RECP flush mount axles (Material # 1036209), (8) square head bolt chrome (Material # 1036208) and a MISSION skate tool.



Spacer Kit

MATERIAL # 1036207

MISSION factory replacement 608 center spacers. Kit contains (8) 608 center spacers (Material# 1036211), and a MISSION skate tool.



688 Center Spacer
MATERIAL # 1036212



Round Bolt
MATERIAL # 1036210



608 Center Spacer
MATERIAL # 1036211



new!

Square Head Flush Mount Axle
MATERIAL # 1037965



Square Head Bolt Chrome
MATERIAL # 1036208



Axle Bolt Flush Mount (Round)
MATERIAL # 1036210



mission roller hockey

2010-2011 CATALOG

PHONE: 1-949-585-9390

FAX: 1-949-585-9395

WWW.MISSIONHOCKEY.COM

© 2010 Bauer Hockey, Inc. and its affiliates. All rights reserved.

BAUER, MISSION, HI-LO and the M logo with wings are all registered trademarks of Bauer Hockey or its affiliates.

TEXALIUM is a registered trademark of Hexel Fabrics Corporation.

VELCRO is a registered trademark of Velcro Industries B.V.

PROCUPI is a registered trademark of XO Athletic Co. used under license.

CLARINO is a registered trademark of Kuraray Co. Ltd.

RINK RAT is a registered trademark of Rink Rat International, LLC.

LYCRA is a registered trademark of Invista Technologies S.a.r.l and/or its affiliates.

ZERO-G Puck is a registered trademark of Legolie International Inc.



AXIOM